

Salisbury Hospice Charity

Spring/Summer Newsletter 2022



**The
Wurzels**

THE WESSEX COUNTRY FAIR RETURNS

A great family day out!



Salisbury
Hospice Charity



WELCOME TO OUR AUTUMN/WINTER NEWSLETTER



Spring is traditionally a time for taking stock and making plans, for looking back to evaluate the recent past and to start planning new adventures.

As many of you will know, last year we looked back to mark 40 years of outstanding care and to thank our supporters for their help towards funding our incredible hospice services – without your support, we could not have reached this incredible milestone, thank you.

As we look to the future, our Fundraising Team have been working hard to update and refresh our events for this year and we have some exciting news to share! Events organised by the team and supporters in the community play a huge part of our fundraising – not only raising essential funds but also helping to spread the word about the hospice and raise the profile of the charity.

Many of you will have previously supported our 'Midnight Walk'. Well this year we are delighted to announce the event will become our 'Celebration Walk' and will tie in with the Queens Jubilee - please see page 7 to find out more.

We are also thrilled to announce The 'Ultimate' Wessex Country Fair will return this year. Bigger and better, with fun for the whole family, it will not only include favourites from previous years but will now extend into the evening with a performance from 'The Wurzels' - please see page 8 to pre-book tickets.

We hope you feel inspired by our newsletter and the variety of ways you can support our fundraising. **Thank you once again for your invaluable support.**

Paula Flower
Head of Fundraising

INSIDE THIS ISSUE

Page 2	Welcome Introduction
Page 3	Angela Turrall Tribute
Page 4	Corporate News
Page 5	Community News
Page 6	Joyfest
Page 7	Celebration Walk
Page 8	The Ultimate Wessex Country Fair
Page 9	Challenge Events
Page 10	Regular Giving
Page 11	Dates for your diary

SUMMER RAFFLE

Enclosed is a book of raffle tickets offering you the chance to win one of 5 exciting prizes!



1 Two Night Cornish Coast Escape at the 4* Luxury St Michaels Resort with Dinner and Hydrothermal Spa Experience for Two.



2 One Night Country Hotel Break with Dinner plus a Guided Discovery Tour of The Bombay Sapphire Distillery with a Gin Cocktail for Two.



3 Luxury Wine, Champagne and Port Tasting paired with Cheese and Truffles.

4 Bean to Bar Experience for Two at Hotel Chocolat.

5 Thames Lunch Cruise for Two.

Please return payment and stubs in the prepaid envelope before the 1st August 2022. Tickets cost £1 each and the draw takes place at The Wessex Country Fair on Saturday 6th August 2022.

Good luck and thank you for your support!

Salisbury Hospice Charity
Salisbury Hospice, Odstock Road,
Salisbury, SP2 8BJ

Telephone: 01722 416353
Email: info@salisburyhospicecharity.org.uk
www.salisburyhospicecharity.org.uk

 [facebook.com/SalisburyHospice](https://www.facebook.com/SalisburyHospice)

 twitter.com/SalisburySHC

Patient enquiries
Telephone: 01722 425113

Your Hospice Lottery
www.yourhospicelottery.org.uk

This newsletter is produced twice a year. If you have any comments we would very much like to hear from you. If you would prefer to receive the newsletter by email or not to receive it at all please either email, telephone or write to us using the details above.

Salisbury Hospicecare Trust Limited (Salisbury Hospice Charity) is a Registered Charity (No. 1123314) and a Company Limited by Guarantee registered in England (No. 6525170)

ANGELA TURRALL - TRIBUTE

Angela would often tell the story of trying out volunteer work in her retirement, first going to a charity shop where she purely did the ironing which did not suit her! She then took an old newspaper to clean some shoes and saw our advert for Bereavement Support Volunteers (BSVs) at Salisbury Hospice. This was in 2004 and Angela applied, staying with us until her sudden death in January this year.

We knew when we interviewed Angela that she would be an asset to the Bereavement Service, but we did not know quite what an asset she would be! Angela brought a quiet wisdom to the work, along with great kindness and empathy. She worked very hard. In her 18 years with us, she supported 120 bereaved people herself, travelling to their homes across the Trust area, and in more recent times, supporting people remotely from home. On top of this, she supported Bereavement Groups and made several hundred phone calls to bereaved people. Angela often came in at the end of the working day, with her friend and fellow BSV Sheila, taking the opportunity to catch up with everyone and share her great sense of humour, which was often directed at herself.

We miss Angela greatly and extend our condolences to her family. She gave wonderful support to bereaved people and always gave herself so willingly, whether that was in her role as a BSV, or as the friend she became to be to her fellow volunteers and to all of us in the Family Support Team.

Thank you, Angela.

The Family Support Team



CORPORATE NEWS



40 - 4 - 40 Club

In January of 2021 we launched our 40-4-40 club initiative, inviting local businesses to jointly raise £40,000 in support of Salisbury Hospice's 40th-year celebrations.

33 big-hearted businesses signed up to the club and raised a phenomenal £41,392. We are extremely grateful to all 33 businesses for their incredibly generous support. The funds raised will make a huge difference to the patients and families supported by Salisbury Hospice, with the funding going towards specialist nursing within the hospice's inpatient unit.

Participating Businesses:

Abicare, B-Fit, Blue Bee, Blue Frontier Ltd, Boatwrights Estate Agents, Breeze Environmental Services, Caroline Cavanagh Ltd, Casa Fina, Dobbies Garden Centres, G&B Griffin Jewellers, Gore Browne Investment Management, Gracewells, Hanna Boddy Yoga, Hazel Wells Lloyds Bank, Luxury Bubble, Mandy Milford Photography, My Salisbury Limited, Namgrass, Nationwide Building Society (Salisbury & Amesbury branches), NatMarshPT, New Hall Hospital, Parker Bullen LLP, Reeve the Baker, Salisbury Radio, Smith & Williamson, Spire Glass Ltd, Step Associates Limited, The Cedars Care Home, Vita Skin Spa, Winchester Gate, Woolley & Wallis



Payroll Giving

Payroll Giving is a tax efficient way to support your local hospice. Employees can give directly from their salary before tax is deducted, meaning the tax they would have paid comes to us. For example, a basic rate taxpayer, making a pledge of £10 a month will actually only pay £8.

You can give as much as you like and can change your donation at any time by just informing your payroll department.

Firstly, ask your payroll department if your company is signed up to the scheme. If not, it's really easy to do so. Just direct them to the government website, gov.uk/payroll-giving.

We have a form on our website for you to complete and hand to your payroll department. Have a look at our website for more details. It's as easy as that!

When you set up a regular donation through Payroll Giving you are doing something amazing. Thank you.

Further details here:

salisburyhospicecharity.org.uk/what-we-do/our-partners

SAVE THE DATE

FUSE NETWORKING EVENT

16th September at The Stones Hotel

We are planning a glamorous and fun evening of business networking to showcase and celebrate local businesses. To find out more or to get involved with this exciting event please contact Louise, details below.

To find out how your business can support Salisbury Hospice, please email our corporate fundraiser Louise Compton louise@salisburyhospicecharity.org.uk



COMMUNITY NEWS



Christmas Tree Collection and Recycling

The collection in early January, kindly sponsored by Boatwrights Estate Agents, was our most successful to date, collecting and recycling 1314 trees and raising a record £21,586. 10% of funds raised will be donated to local charity Serve On, who assisted with the collection. The scheme was a huge community effort, and we would like to thank each of the wonderful 73 volunteers who helped collect and recycle the trees, including those from many local businesses who generously donated their time and resources, in support of the hospice.

Shrewton Running Club

The members of this wonderful running club have raised an incredible £3,500 throughout the last two years, both as a group and by taking on individual challenges. Thank you so much, we think you are amazing!



Michelle Read

Never one to let a pandemic halt her fundraising, Michelle has continued to raise funds by holding various online raffles, auctions and sales raising around £4,000. Incredibly, Michelle has raised more than £25,000, in memory of her mum, Sally, since 2018. Thank you Michelle.

St John Singers

Thank you to the marvellous St John Singers who performed an enchanting "Magic of Christmas" concert at St Thomas Church in December, raising £2,485.



Grand Fundraising Concert

Thank you also to Caryn Curtis who performed a wonderful array of songs, ably accompanied by George Carruthers, Gary Heath and Mike Gillett. This delightful evening raised £1,100 in memory of George's wife Anne.



Sports and Challenges

So many wonderful supporters have put their bodies on the line to raise funds for Salisbury Hospice in memory of their loved ones: **The Windsor Family** walked 135 miles of the Cornish coast line, **Keith Miller** completed the Centurion 100 Grand Slam, **Tania Green** ran the London Landmarks Marathon, **Sarah Llewelyn** ran the Bournemouth Marathon, **Neil Tonge** walked Wainwright's Coast to Coast, **Pippa and Scott Baker** climbed the 3 Peaks, **Helen Iveson** ran the Clarendon Marathon, **Danielle & Mark Leboutillier Lewis** ran the New Forest Off Road Half Marathon, **Jack Ford** ran the Great Bristol Half Marathon, **Phillip Robbins** climbed the Yorkshire 3 Peaks, **Nicki Stuart** ran the Beachy Head Marathon, **Tom Chilton** completed 24 hours of Murph, and finally the ever- youthful **Brian Ford** walked 87 miles for his 87th birthday. Collectively these amazing fundraisers have raised an astonishing £16,000! Thank you all, you are a total inspiration.



If you are inspired to fundraise for Salisbury Hospice and would like some help, please email tamsin@salisburyhospicecharity.org.uk

Fabulous Family Fun Day 8

SALISBURY RUGBY CLUB **FREE ENTRY!**

Saturday 14th May, 12 noon - 10pm

BEER FESTIVAL . LIVE MUSIC .
PIMMS & PROSECCO BARS . BBQ . PIZZA
FOOTBALL AND TOUCH RUGBY TOURNAMENTS
CHILDREN'S ENTERTAINMENT AND MUCH MORE!

Kindly sponsored by **HENDY**

Salisbury Hospice Charity logo and social media handles: @FABULOUSFAMILYFUNDAY

JOYFEST

Saturday 9th July 2022
Salisbury Rugby Club, from 10.30am



On Saturday 9th of July, Sarah Frampton will host Joyfest. Joyfest is an all-day music festival that will be held in memory of Sarah's beloved mum, Joyce Stainer, who loved music and dancing. Joyce sadly passed away under hospice care in July 2012.

The festival will welcome ten local performers including: Up All Night, The Vibe, Kingz of Leon, Horizon, Off The Cuff, Davey Jones Locker, Plaitford Common, Somehow I'm Home, Ribble and The Ben Poore Project. There will be food and drink including a BBQ, Pizza Pig, Mama's Kitchen (Thai), Lady Lyn's Ice Creams, Patricia's Delight Doughnuts, homemade cakes and candyfloss.

Tickets available here:
wegottickets.com/event/538864

Sarah's Story

Joyce's last wish was to see her daughter marry the man of her dreams and tragically after being given just two weeks to live, her daughter Sarah had to think fast about her wedding plans.

Sarah and her fiancé Kevin were due to get married on the 31st of July 2014, but in 2011 mum, Joyce, was sadly diagnosed with cancer. In 2012 Sarah was told that her mum had another tumour in her stomach as well as subsequent tumours in the rest of her body. Joyce's prognosis was heartbreaking, she had just a few weeks remaining. Sarah had learnt that of all the devastating news her mum had been told, it was the thought of not being a part of her daughter's special day that upset her the most.

After learning of Sarah and Kevin's wedding plans, Joyce's doctors and nurses encouraged the couple to reach out to the Hospice Chaplin and see if the wedding could be held in Salisbury Hospice. Sadly this was not possible and instead they suggested applying for a marriage waiver at their local registry office so they could get married and have a blessing at the hospice, ensuring that Joyce could be a part of the special day.



The event is set to keep the whole family entertained with a bouncy castle, face painting, temporary tattoos, balloon modeller & raffle.

Don't miss out on this family fun event, that's sure to bring a little joy to your day.



"We applied for the marriage waiver on the Thursday and got given the go ahead Friday for us to get married on the Saturday, giving us less than 24 hours to organise everything! We made a few phone calls to family and friends then we went to the hospice to give my parents the news. The smile on my mums face was magical."

After frantically shopping for a suit, dress, flowers and rings, with the help of family and close friends, Sarah and Kevin were able to tie the knot at Ringwood Registry Office. After the wedding they departed straight for the hospice to find the hospice team had decorated the day room and the Hospice Chaplin waiting to carry out the blessing.

"My mum had to be wheeled in on her bed, but she still looked beautiful and had a smile on her face throughout. It made her day, she was so grateful. Sadly she passed away just a few days later."

Joyce spent her last days at Salisbury Hospice and will always be remembered by the team, along with this special day.

In gratitude for the care her mum received and the support she was given for the wedding Sarah will be hosting the above event Joyfest, in aid of Salisbury Hospice Charity.

CELEBRATION WALK

We are very excited to introduce our new Celebration Walk! We invite you, your family and friends, to step out in solidarity with Salisbury Hospice Charity and all members of our community, as we commemorate our losses and celebrate our resilience over the past two years.

Much has changed since our last in person Midnight Walk held in May 2019 and we'd like to take this opportunity to recognise and celebrate the small victories, the big losses, the challenges overcome and remember those who are greatly missed. The pandemic has changed us all and we wish to acknowledge that; to gather as a community, and collectively look towards a brighter future.

The Celebration Walk will start and finish at the Salisbury Guild Hall on Saturday 21 May 2022. There will be a choice of two brand new routes – a 5 mile and a 10 mile – which will be enjoyed in the early evening.

Features of the Celebration Walk will include: the opportunity to light a candle in St Thomas's, the city church, the placing of a permanent memorial tree for our community and the opportunity to tie a ribbon on the tree at the end of the walk.

In line with HRH The Queen's wish to celebrate her Jubilee by planting trees, each finisher will receive a sapling instead of a medal. This will be a living reminder of whoever or whatever you are celebrating.

Salisbury Hospice Charity and the community we serve have much to celebrate – please come and join us for this special event.



Candle lighting at St Thomas's



Salisbury Hospice Charity Memorial Tree



Ribbon tying



"Living medal" in the form of a sapling

Event Details:

Date: Saturday 21 May 2022

Place: Salisbury Guild Hall

Registration: 6pm

Start: 7pm



Register here:
salisburyhospicecharity.org.uk/celebration-walk



The Ultimate Wessex Country Fair

**The
Wurzels**

We are delighted to confirm that the Wessex Country Fair is back at Wilton House Estate and is bigger and better than ever!



Returning to the country roots of the event and focusing on fun, entertainment, good food with exciting new features and traditional old favourites. We will be putting on an enticing programme which will appeal to everyone.

This year the fair will take place on Saturday 6th August, with gates opening at 11am and closing at 10pm. There will be four main areas, which will be supported by many other complimentary additions.



The music stage will be live from midday to 10pm, offering a selection of country, blues, jazz and folk for your entertainment. We are delighted to announce the headline band will be The Wurzels and they will be supported by many of our own local artists.

The entertainment arena will feature a combination of professional and local acts and will be on the go from midday to 6pm. As part of our vision for the event we will feature as many local performers as possible, including local dance schools, drum majorettes and martial arts schools, to mention a few.

The heart of the fair will be the Hospice Village where visitors can drop in for some calm and respite from the excitement of the rest of the fair. In the village will be areas where you can sit and enjoy refreshments purchased from the excellent food court. Perhaps have a massage or a manicure, enjoy some quiet creative time or just dwell in the beautiful surroundings of the Wilton Estate.



Back again will be our steam and vehicle exhibits, as well as children's attractions such as a fairground, donkey rides and competitions to ensure the whole family is entertained.

A new feature this year will be a "Show and Shine" for camper vans, which will allow visitors the opportunity to check out some features of these fabulous vehicles. Plus the old favourites of steam engines and vintage cars.

For dog lovers, the Country Fair Dog Show will again be featured, with plenty of different classes making it a must for all shapes and sizes of our canine friends.

Of course, no country Fair would be complete without the opportunity of picking up a bargain at one of our many outlets, including the Craft Marquee, where all items for sale will have been handmade by the vendors selling them. There will also be a food court and two bars available.

Event Details:

Saturday 06 August 2022

Wilton House Estate | 11am – 10pm

Through this newsletter we are offering our valued supporters' access to Very Early Bird Tickets.

This is a limited offer and available only till 20 May.



Tickets
salisburyhospicecharity.org.uk/wessexcountryfair



LIVE MUSIC



LOCAL TRADERS



ARENA ACTS



FAIRGROUND



BAR



DOG SHOW



STEAM AND VEHICLE EXHIBITS

CHALLENGE EVENTS

Saturday 17th September 2022

SWIM SERPENTINE

Swim Serpentine is the UK's biggest one-day open water swimming festival. This is a challenge with a difference. Take the plunge at this hugely popular event, held at the famous Serpentine Lake in London's Hyde Park.

The event offers three different event distances to suit all abilities:

Half mile:	a great entry-level event for those new to open water swimming
One mile:	one full lap of the famous Serpentine Lake
Two mile:	ideal for swimmers looking to test themselves with two laps of the Serpentine

Last year, more than 5,000 people took part in the event, including Hollywood star Minnie Driver and Olympic gold medal-winning sprinter Linford Christie.

We have limited places for this spectacular event, so please contact our Events Fundraiser Moyra, moyra@salisburyhospicecharity.org.uk if you are interested.



Sunday 2nd October 2022

THE VIRTUAL LONDON MARATHON

Run, walk, dance or jog the Virtual London Marathon on Sunday 2nd of October. We have secured a handful of places for this event which gives you the freedom to take on 26.2 miles your way, on the route of your choice, at any time from 00:00 to 23:59:59 BST on the same day as the mass event in London.

You can do it with friends or on your own, from home or away, in stages or all at once, it's up to you! On completion, you will receive a finishers medal and a souvenir t-shirt.

If you would like to apply for one of our places, please contact moyra@salisburyhospicecharity.org.uk or you can enter the event under your own steam and still raise funds for us by visiting tclondonmarathon.com/the-event/virtual-marathon



REGULAR GIVING

Regular giving is a wonderful way to support Salisbury Hospice, helping to fund the vital support and professional care we offer to patients, families and carers.

Your monthly donation could help fund a member of our Hospice at Home team. Annelise is one of our valued nurses; she has worked within the service for five years and is passionate and dedicated to providing exceptional end of life care to her patients.

All care services provided by Salisbury Hospice are provided free of charge to those who need it, when they need it. Each year this need increases within our community. We, therefore rely on the generous support of our donors to fund our essential work.

Whether you choose to donate monthly, quarterly or annually, your regular donation will provide comfort, relief and support to someone within your community.



Hospice at Home provides high-quality care for patients at the end of their life, who wish to stay in their own home. The service not only gives our patients a choice as to where they spend their final days but, it also acts as 'crisis intervention', preventing unnecessary admissions to Salisbury District Hospital, the hospice or an alternative care setting. I feel privileged to be able to support families during the most difficult time of their lives.



Annelise Herd,
Hospice at Home Nurse



HOW YOUR DONATIONS HELP:

- £10** provides art and craft materials for the day centre
- £20** funds a bereavement support session
- £50** provides a complementary therapy session
- £100** funds a home visit from a community nurse
- £500** pays for one day of care on our Inpatient Unit

If you would like to make a regular donation, please complete the donation form at the back of the newsletter.



DATES FOR YOUR DIARY 2022



11TH MAY

Daoiri Farrell - Singer & Bauzouki player, Brown Street



23RD JULY

Salisbury Motorcycle Club Centenary Motorcycle Show, Salisbury Rugby Club



16TH SEP

FUSE Networking Event



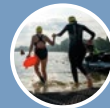
14TH MAY

Fabulous Family Fun Day, Salisbury Rugby Club



6TH AUG

Wessex Country Fair



17TH SEP

Swim Serpentine



21ST MAY

Celebration Walk



10TH SEP

One Night at The Casino Ball, White Hart Hotel



24TH SEP

Walk the Test Way, Romsey



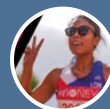
9TH JULY

Joyfest Music festival, Salisbury Rugby Club



10TH SEP

Garden Open and Clothes Sale, Hatch House, Tisbury



2ND OCT

The Virtual London Marathon



Amazon Smile

Did you know you can give to Salisbury Hospice Charity at no extra cost to you by signing up to Amazon smile? All you need to do is sign up at smile.amazon.co.uk. With each eligible purchase you make, you will be making a small donation to Salisbury Hospice!



Brilliant Little Brands

If you prefer to support independent businesses then Brilliant Little Brands is the shopping destination for you. 10% of all sales are donated to charities at no cost to you.

brilliantlittlebrands.com



GiveaCar

Do you own a vehicle that you want to sell or get rid of? Then please think about donating it to us through Giveacar. They provide a nationwide FREE service!

To arrange the donation of a car, visit giveacar.co.uk or call 020 7736 4242, quoting Salisbury Hospice Charity.



Recycle 4 Charity

Recycle your ink cartridges via our Recycle4Charity programme. To start, all you need to do is go to the link below and sign up for your free account.

recycle4charity.co.uk



Hospice Lottery

Have you heard about our hospice lottery? Our weekly lottery draw is a fun and easy way to raise money for Salisbury Hospice Charity, plus you could win up to £25,000!

yourhospicelottery.org.uk/causes/salisbury_hospice_charity



EasyFundraising

If you're planning on doing some online shopping, sign up to Easyfundraising and turn your shopping into donations.

easyfundraising.org.uk

YOUR CONTRIBUTION COUNTS

However large or small, your donation will help us to improve the quality of life for patients and their families.

HOW YOUR DONATIONS HELP

- **£10** provides art and craft materials for the day centre
- **£20** funds a bereavement support session
- **£50** provides a complementary therapy session
- **£100** funds a home visit from a community nurse
- **£500** pays for one day of care on our Inpatient Unit



YOUR DETAILS

Title	First Name	Surname
Address		
		Post Code
Telephone/Mobile	Email	

For monthly or annual donations please fill in the below

REGULAR DONATIONS

Please pay to Natwest Bank Plc, 48 Boar Row, Salisbury SP1 1DF for the credit of Salisbury Hospice Charity. Account No: **47152680**, Sort Code **54-41-19**.

From:

Account Number

Bank Sort Code

Name of Bank

Address of Bank

Postcode

I would like to make a donation of £2.50 £5 £10

Other Amount £

Monthly Quarterly Annually

To start on (date)

and thereafter until you receive further notice from me in writing to my bank. Please cancel any previous instruction.

Signature

Date

One-off donation

ONE-OFF DONATION

I would like to make a donation of £

Card No

Start Date / / Expiry Date / /

Issue number (Switch Only) 3 Digit Security Code

Please make cheques payable to Salisbury Hospice Charity

giftaid it

Boost your donation by 25p of Gift Aid for every £1 you donate. Gift Aid is reclaimed by the charity from the tax you pay for the current tax year.

I want to Gift Aid my donation of £

and any donations I make in the future or have made in the past 4 years to Salisbury Hospice Charity.

I am a UK taxpayer and understand that if I pay less Income Tax and/or Capital Gains Tax than the amount of Gift Aid claimed on all my donations in that tax year it is my responsibility to pay any difference.

Signature

Date

Please send your donation/completed form to Salisbury Hospice Charity, Salisbury Hospice, Odstock Road, Salisbury, SP2 8BJ using the freepost envelope enclosed. Tel: 01722 416 353.